



## FIRMWARE 1.5 UPGRADE - B014E8ZC7E



### **DisplayPort 1.4 to HDMI 2.1 4K/240Hz HDR Active Adapter B014E8ZC7E**

Firmware 1.5 upgrade software is supported on Microsoft Windows 7/10/11

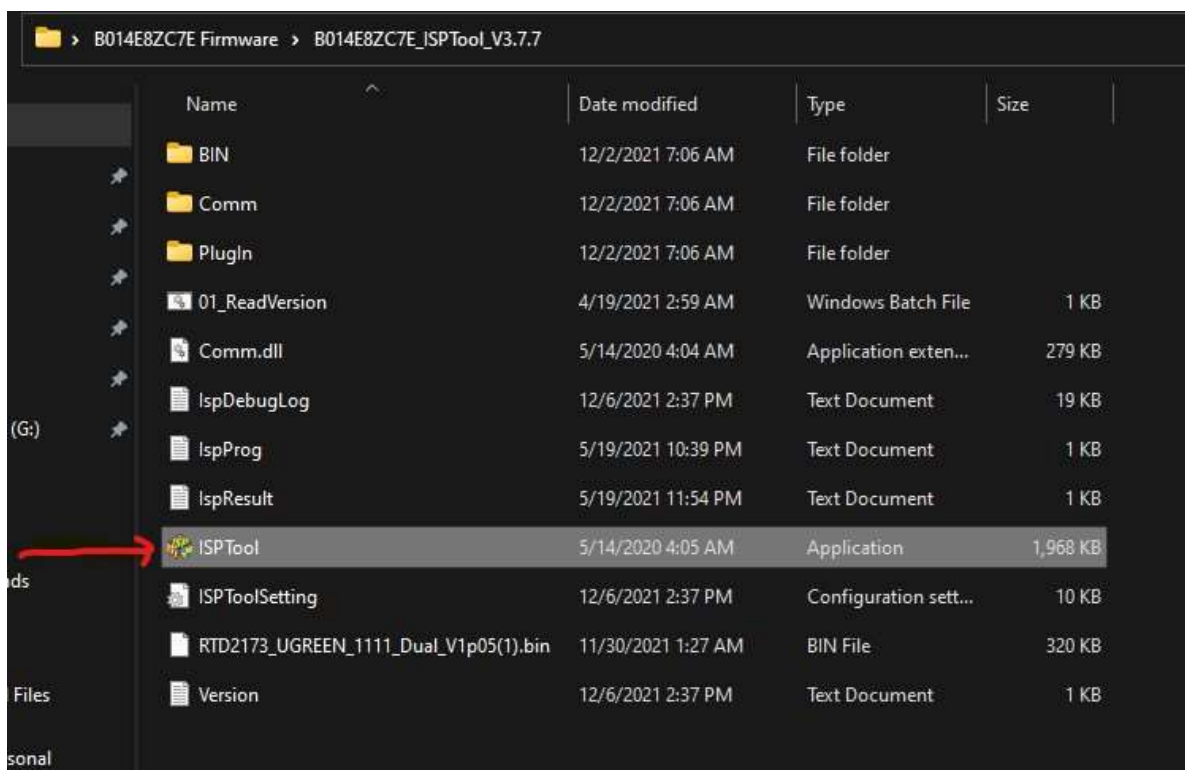
The latest 5xxx NVIDIA drivers are not supported you must install drivers 472,12, 471,68 or 471.41. You can download Legacy Drivers from Nvidia website:

<https://www.nvidia.com/Download/Find.aspx>

Firmware download: [https://uptab.com/content/B014E8ZC7E\\_Firmware15.zip](https://uptab.com/content/B014E8ZC7E_Firmware15.zip)

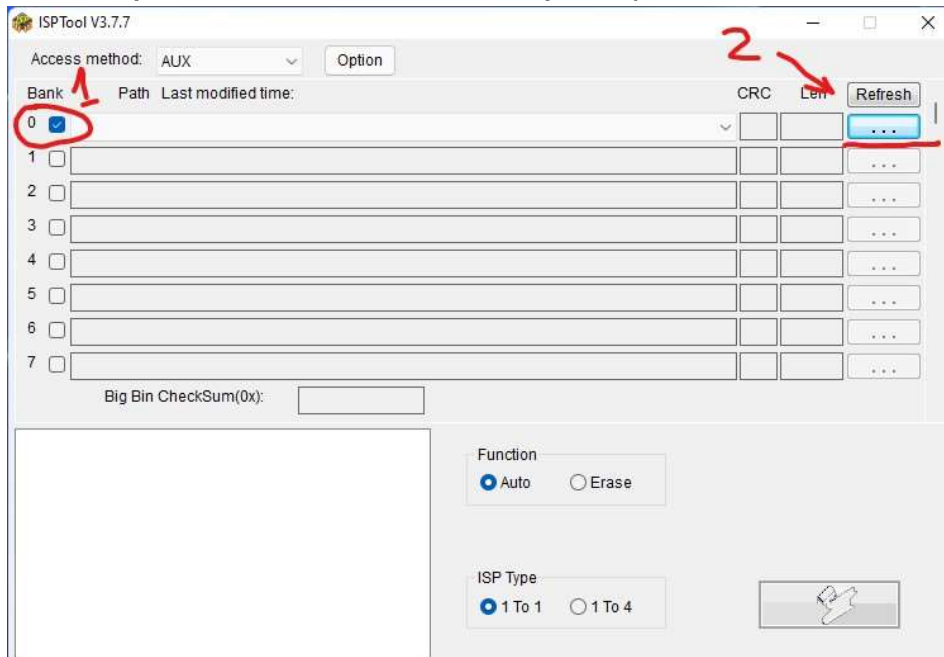
## Firmware Upgrade Procedure: **DisplayPort 1.4 to HDMI 2.1 4K/240Hz HDR Active Adapter**

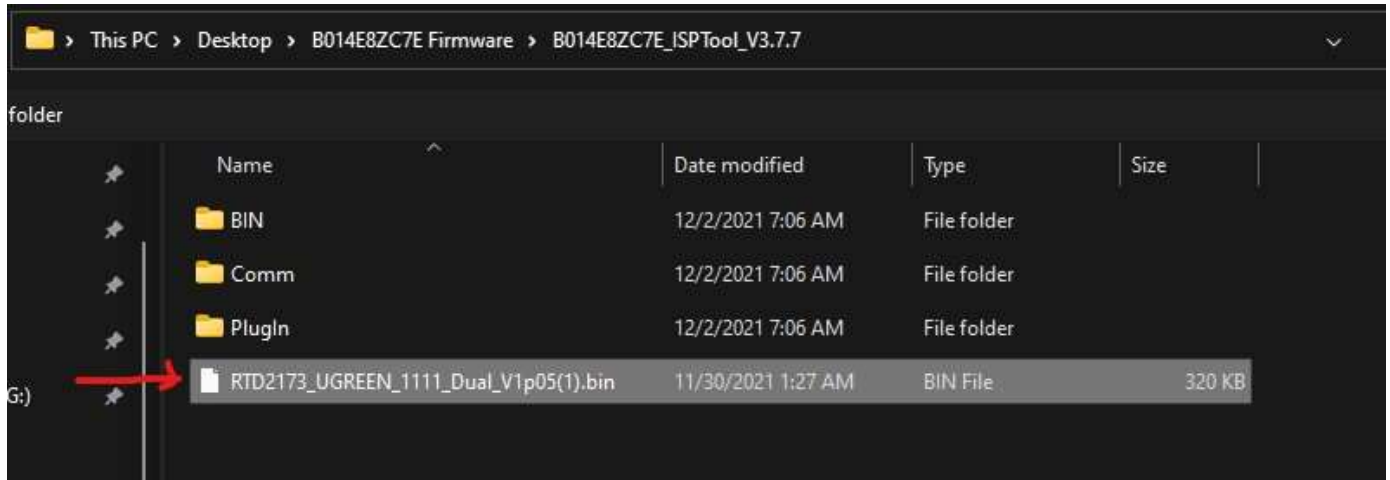
- 1) Unzip File B014E8ZC7E\_Firmware15.zip on your Desktop
- 2) Open file ISPTool.exe from Desktop\B014E8ZC7E  
Firmware\B014E8ZC7E\_ISPTool\_V3.7.7



## Firmware Upgrade Procedure: **DisplayPort 1.4 to HDMI 2.1 4K/240Hz HDR Active Adapter**

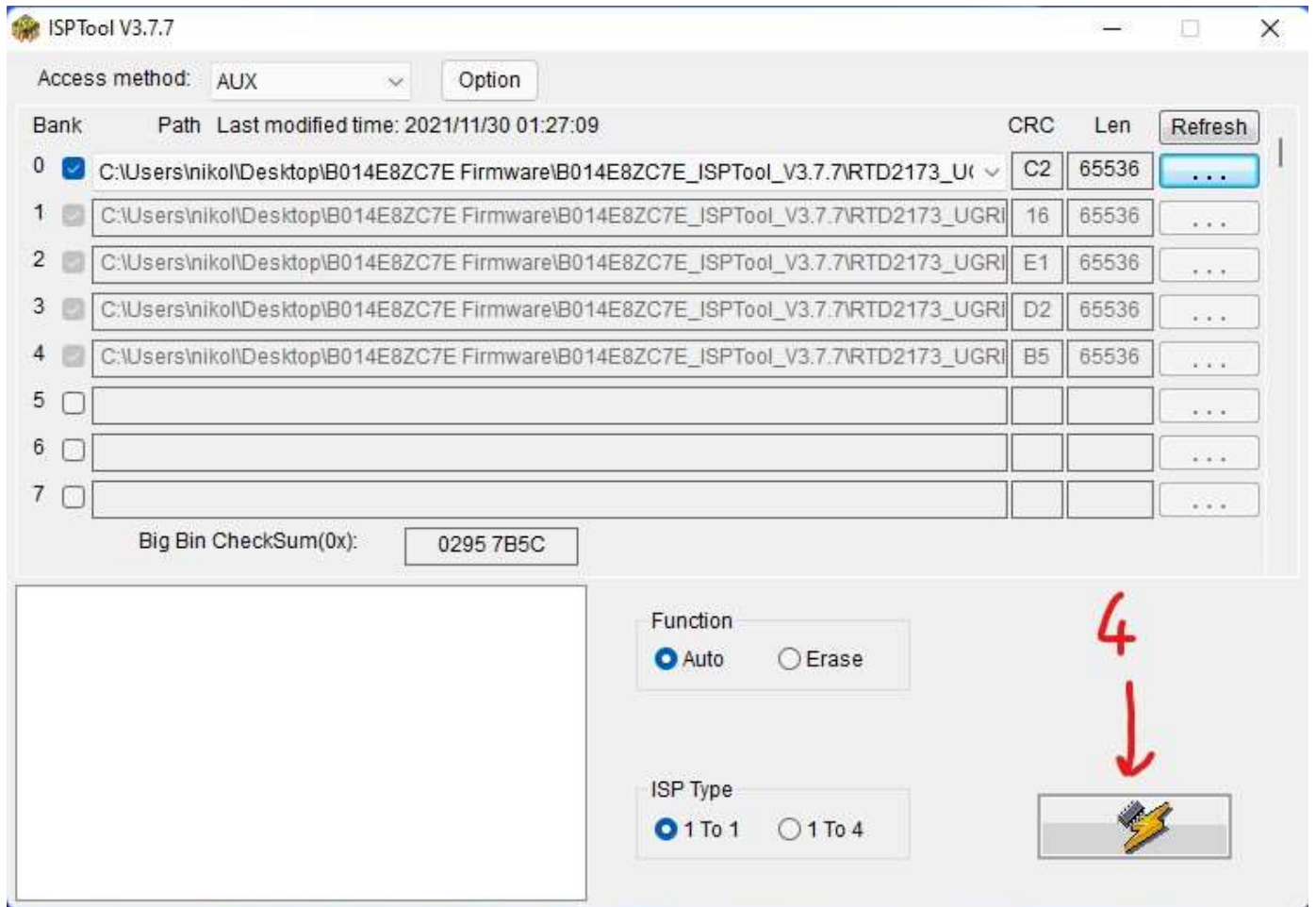
- 3) Click on the box next to (0). Make sure Access method: is AUX then click on . . . (three dots under Refresh) to open firmware file.



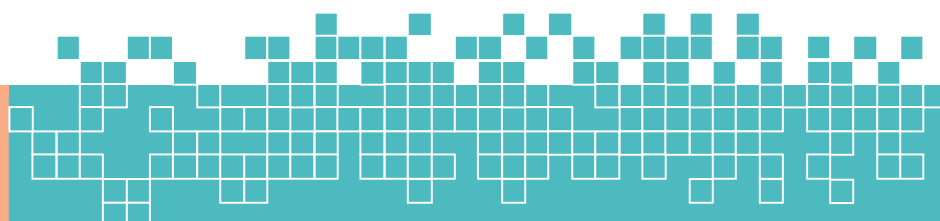


Firmware Upgrade Procedure:  
**DisplayPort 1.4 to HDMI 2.1 4K/240Hz HDR Active Adapter**





Firmware Upgrade Procedure:  
**DisplayPort 1.4 to HDMI 2.1 4K/240Hz HDR Active Adapter**



During the upgrade process screen may flash do not turn off or disconnect your adapter.

The screenshot displays the ISPTool V3.7.7 application window. At the top, the 'Access method' is set to 'AUX' and the 'Option' button is visible. Below this is a table of memory banks with columns for 'Bank', 'Path', 'Last modified time', 'CRC', 'Len', and 'Refresh'. Bank 0 is selected with a checkmark. A 'FW Update Progress' dialog box is overlaid on the table, showing a green progress bar at 80%. In the bottom-left corner, a log window shows the following messages: 'Bank 3 erase successfully. Write code to bank 3 successfully', 'Bank 2 erase successfully. Write code to bank 2 successfully', 'Bank 1 erase successfully. Write code to bank 1 successfully', and 'Bank 0 erase successfully.' The bottom-right area contains 'Function' radio buttons for 'Auto' (selected) and 'Erase', and 'ISP Type' radio buttons for '1 To 1' (selected) and '1 To 4'. A yellow lightning bolt icon is also present.

Bank	Path	Last modified time: 2021/11/30 01:27:09	CRC	Len	Refresh
0	C:\Users\nikol\Desktop\B014E8ZC7E Firmware\B014E8ZC7E_ISPTool_V3.7.7\RTD2173_Ugr...		C2	65536	...
1	C:\Users\nikol\Desktop\B014E8ZC7E Firmware\B014E8ZC7E_ISPTool_V3.7.7\RTD2173_UGR...		16	65536	...
2	C:\Users\nikol\Desktop\B014E8ZC7E Firmware\B014E8ZC7E_ISPTool_V3.7.7\RTD2173_UGR...		E1	65536	...
3	C:\Users\nikol\Desktop\B014E8ZC7E Firmware\B014E8ZC7E_ISPTool_V3.7.7\RTD2173_UGR...		D2	65536	...
4	C:\Users\nikol\Desktop\B014E8ZC7E Firmware\B014E8ZC7E_ISPTool_V3.7.7\RTD2173_UGR...		B5	65536	...
5					...
6					...
7					...

FW Update Progress

80%

Bank 3 erase successfully.  
Write code to bank 3 successfully

Bank 2 erase successfully.  
Write code to bank 2 successfully

Bank 1 erase successfully.  
Write code to bank 1 successfully

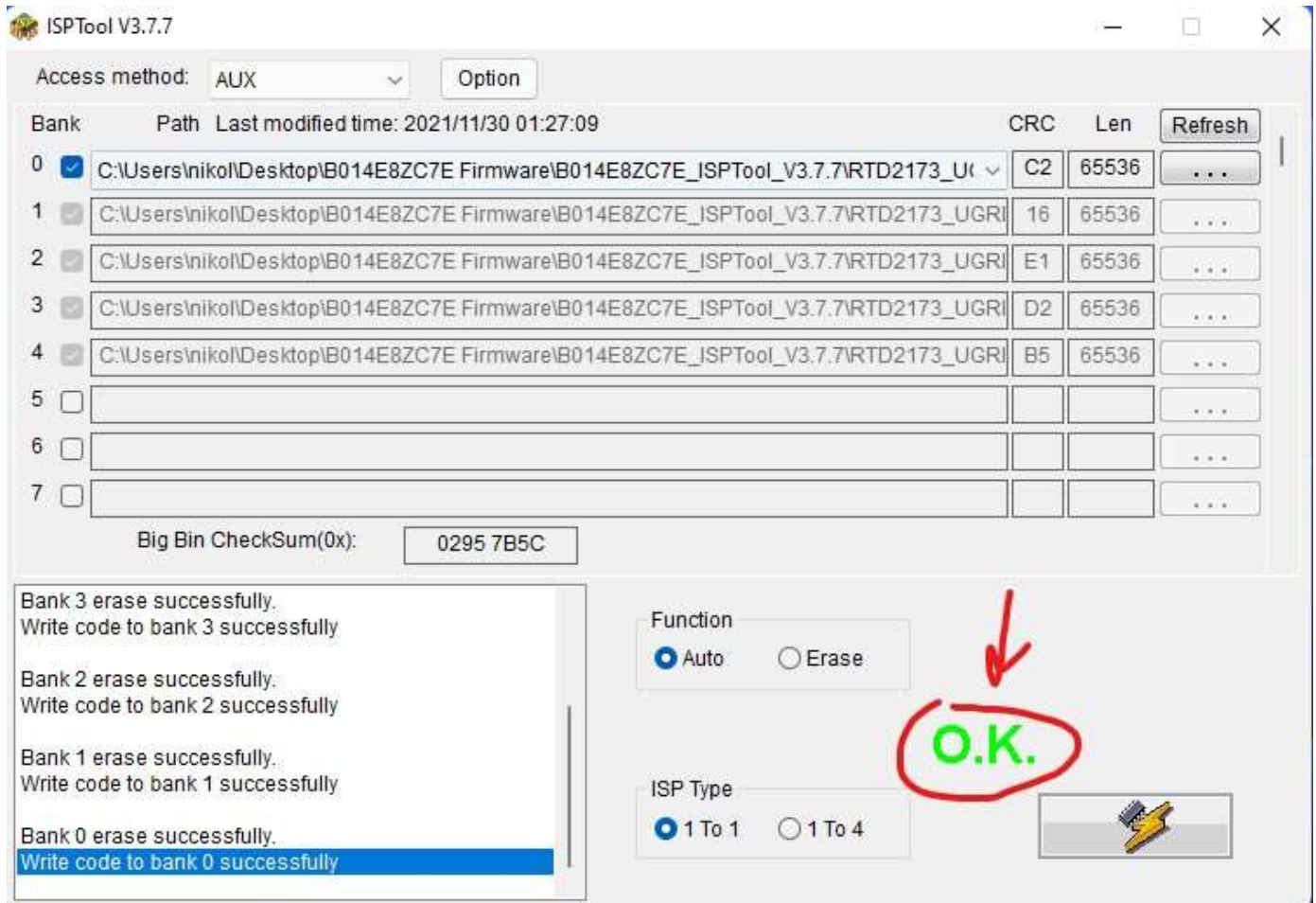
Bank 0 erase successfully.

Function  
 Auto  Erase

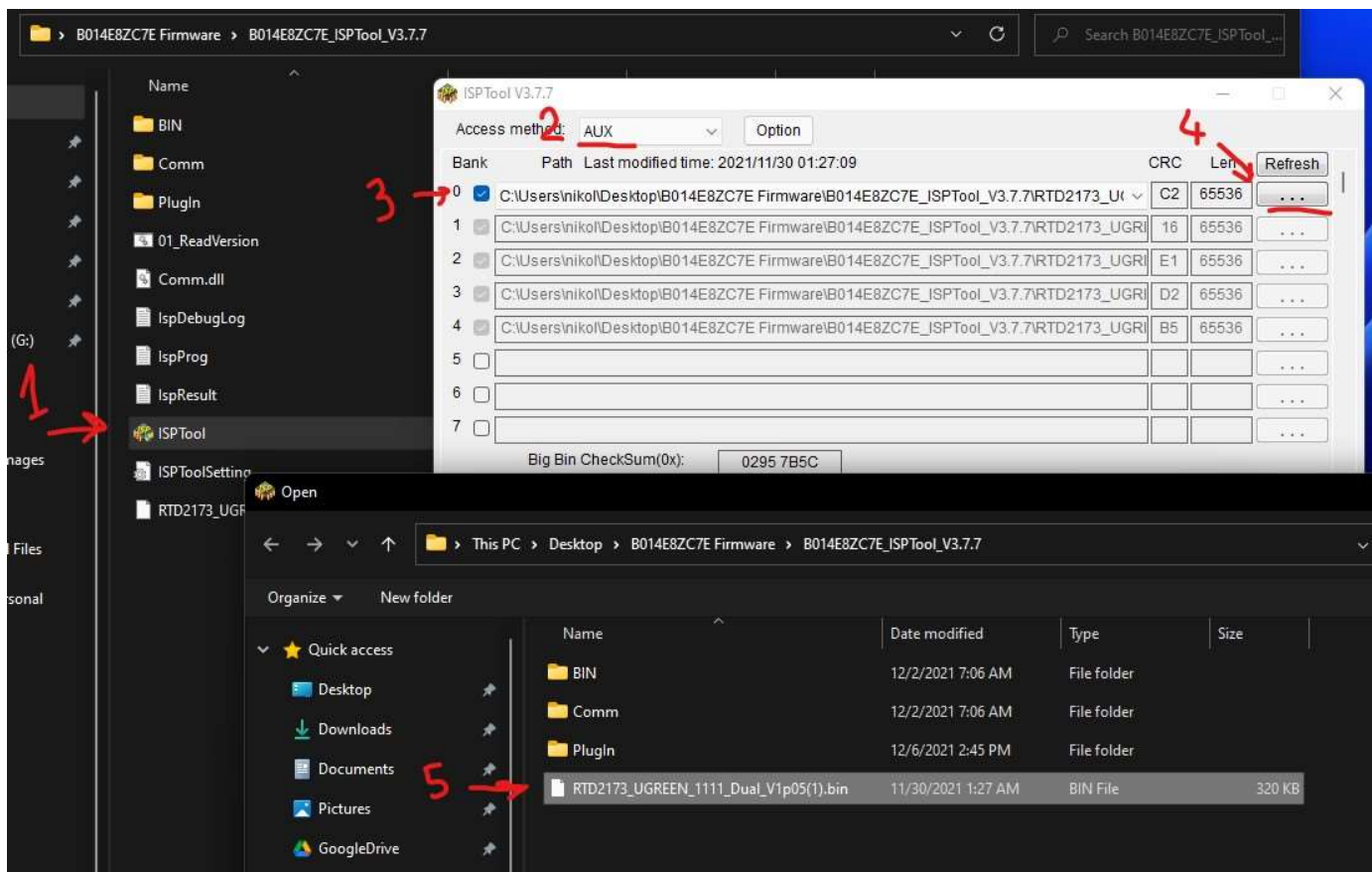
ISP Type  
 1 To 1  1 To 4

## Firmware Upgrade Procedure: DisplayPort 1.4 to HDMI 2.1 4K/240Hz HDR Active Adapter

After successful upgrade a green O.K. will be displayed.



## Firmware Upgrade Procedure: DisplayPort 1.4 to HDMI 2.1 4K/240Hz HDR Active Adapter



# Uptab®

UPTab (US) Store

[www.uptab.com](http://www.uptab.com)

[cs@uptab.com](mailto:cs@uptab.com)

+1 (877) 333-1505

